



CFLA
CREDIT UNION
 P.O. BOX 468
 DONALDSONVILLE, LA. 70346

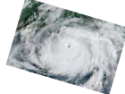
Newsletter

3rd Quarter 2021

*Bridging Your Financial Needs
 With A Little Sunshine*



Loan Payment Relief In Response To Hurricane Ida



To help ease financial burdens of our members impacted by Hurricane Ida, a **Deferred Loan Payment** option is being offered now through December 31, 2021.

The CFLA Credit Union will offer a **60-day payment deferral** to members with loans in good standing, allowing extension of the term of the loan and deferral of payments to a later date.

Stipulations apply, so please contact **Dana Mitchell @ (225) 264-0779** or dana.mitchell.contractor@cfindustries.com for more details or to sign up today!



The Credit Union Board would like to extend a warm welcome to the following new members: Akeem Bell, Isabella Bourg, Louis Bourg, Riley Bourg, Keith Edmonston, Melissa Fisher, Meredith Hamed, Gage Legendre, AnnaBeth Morales, Ferald Rose, and Glenn Zeringue, Jr.

We look forward to doing business with all of you!

Current Rate Schedule

New Rate

Dividend Rate

3rd Quarter 2021 - - **0.15%** APY

Signature Loans

1 - 12 months - - 7.00% APR

13 - 36 months - - 8.25% APR

New Car/Truck/Motorcycle

1 - 60 months - - 2.50% APR

61 - 72 months - - 3.00% APR

Used Car/Truck/Motorcycle

1- 60 months - - 3.75% APR

New RV/Boat/ATV/ Etc.

1 - 48 months - - 3.50% APR

49 - 60 months - - 4.00% APR

Share Loans

1 - 24 months - - 1.50% APR

25 - 48 months - - 2.25% APR

49-60 months - - 3.00% APR

Tuition Loans

1 - 12 months - - 4.25% A PR

Computer Loans

1 - 12 months - - 4.25% APR

13 - 24 months - - 5.50% APR

Demo/Program Car/Truck/

Motorcycle

1 - 60 months - - 3.00% APR

Used RV/Boat/ATV/Etc.

1 - 60 months - - 4.50% APR

Happier Holidays. . .
 to be had with a loan
 from CFLA Credit Union!!

Buy everything on their Wish Lists this Christmas and bring smiles to those cute little faces!

See loan opportunities and rates above, then contact Dana Mitchell at the Credit Union Office for more details!
Stipulations may apply.

CFLA Credit Union

Hours of Operation:

Monday - Thursday, 7:30AM - 3:30PM

Friday, Closed

Phone: (225) 473-0331

www.cflacu.com

Questions?

Contact the Credit Union Manager, Dana Mitchell, at (225) 473-0331, or any of your Credit Union Board Members: President, Duane Lee - (225) 473-0287, Vice-President, Brian Janis - (225) 473-0379, Treasurer, Lenny Pousson - (225) 473-0367, Secretary, Toni Simon - (225) 746-4847, Yvonne Cortez - (225) 473-0374, Jarett Daigle - (225) 473-0391, or Jamie Gravois - (225) 746-4864.

Your savings federally insured to \$250,000

NCUA

National Credit Union Administration
 A U.S. Government Agency